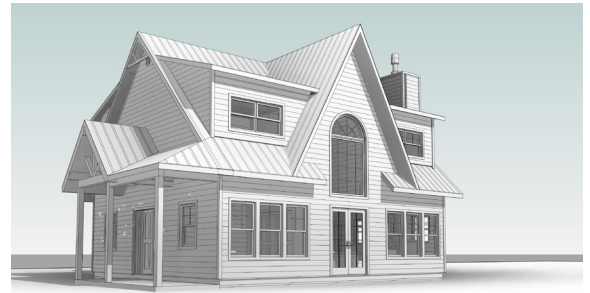




Good people building great things.



Our mission is to build exceptional experiences.

As leaders in creating custom, enhanced living spaces throughout the Kawarthas, we believe in the power of our people above all else. Through assembling a team of knowledgeable, energetic and creative professionals, we are able to collaboratively deliver an exceptional experience, not just for our clients but for everyone involved on a project.



DESIGN-BUILD PROFESSIONALS



Labourer

The Role

The Labourer is responsible for assisting the build-team with all tasks required to repair, alter, construct, reconstruct, install, and maintain structures and furnishings.

Key Responsibilities:

- Maintain daily job-site housekeeping
- Set up and put away of tools daily
- Help maintain the jobsite. Includes: mixing of concrete, carrying equipment, supplies and materials
- Maintains inventory of hardware and fasteners needed and used on jobsites
- Complete general site clean-up
- Works to schedule, timely task completion
- Maintains housekeeping of vehicles (trucks, trailers, and boats) used at the jobsite
- Shuttle subtrades and KLC to jobsites by boat/ATV/snowmobile
- Measure, cut, shape, assemble and join materials made of wood, wood substitutes and other materials
- Maintain, clean, and safely store KLC equipment

Qualifications:

- Knowledge of Occupational Health & Safety Act, and Construction regulations
- Knowledge of safe operation of basic hand and power tools
- Must have valid G-License with a clean driving record
- Must have current valid boating license.
- Must purchase basic hand and power tools.

***Please include a cover letter telling us something about you; what would make you our next great team member!**